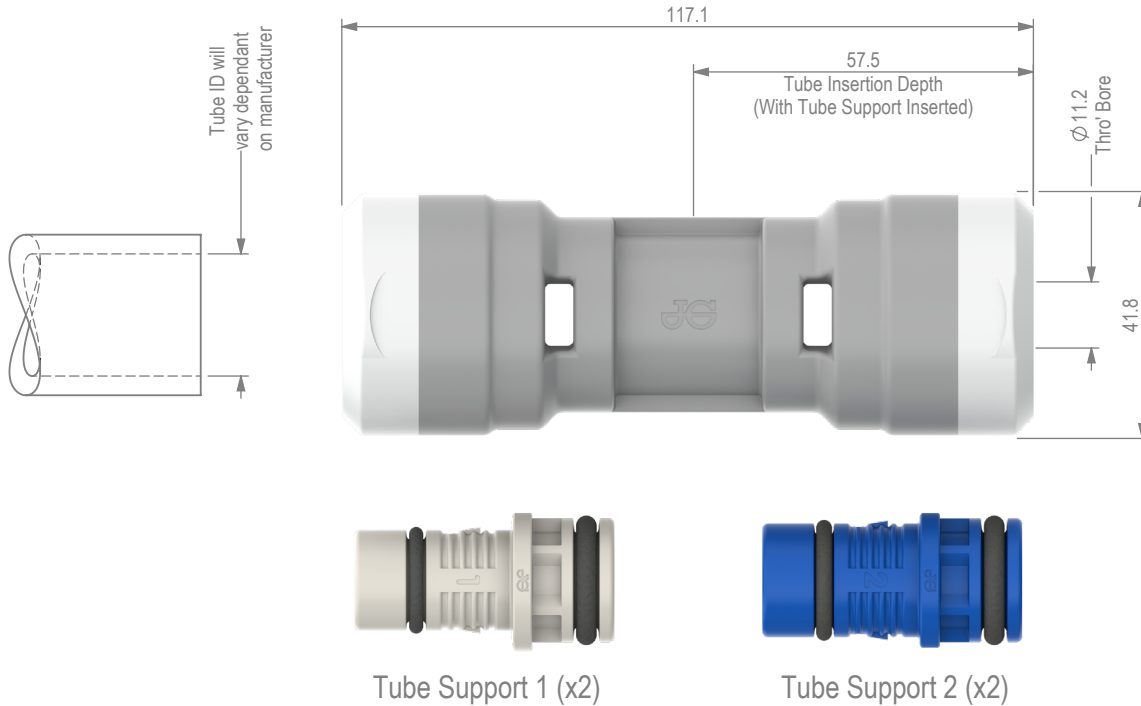


25mm/26mm Universal ID Straight Connector

The John Guest Universal ID Straight Connector has been developed to provide a quick, push fit method for repairing, adding to existing, or installing new composite pipe systems. The connector is supplied with a number of tube supports to suit a wide range of ID tubes.



A Suitable Tube Support must be selected based upon tube ID - See Sheet 2

Dimensions in mm

Parts List

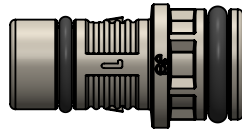
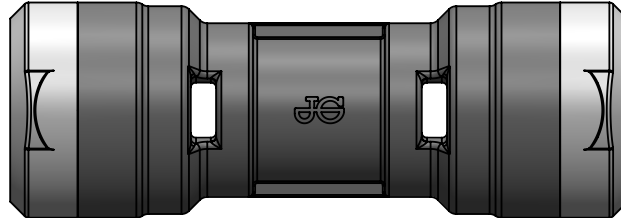
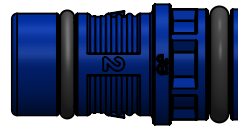
Part Description	Material	Part Description	Material
Body	Polyphenylsulphone (Unfilled), Light Grey	ID Tube Support 1	Polyphenylsulphone (Unfilled), Cream
Preload Spring & Collet Cover	Acetal Copolymer (Unfilled), White	ID Tube Support 2	Polyphenylsulphone (Unfilled), Blue
Collet	Nylon 12 (Glass Filled), White & Stainless Steel		
O'rings	EPDM (Ethylene Propylene), Black		

Technical Information

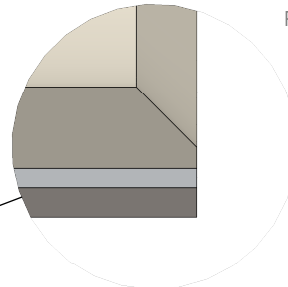
Working Pressures & Temperatures	Applications
Water 20 bar at 20 °C 7 bar at 83 °C 10 bar at 70 °C Minimum Service Temperature 1 °C Maximum Service Temperature 90 °C	Domestic Hot & Cold water ✓ Central Heating ✓

25mm/26mm Universal ID Straight Connector
Introduction:

The John Guest Universal ID Straight Connector has been developed to provide a quick, push fit method for repairing, adding to existing, or installing new composite pipe systems. The connector is supplied with a number of tube supports to suit a wide range of ID tubes.


Tube Support 1 (x2)

Tube Support 2 (x2)
1 - Pipe Preparation

Depressurise system. Cut into system and prepare the cut end using an appropriate pipe preparation tool, ensuring the front face is cut square and the pipe is round.

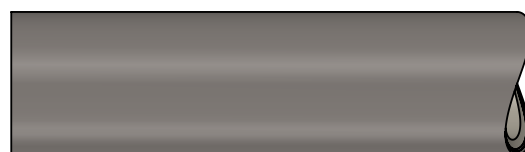
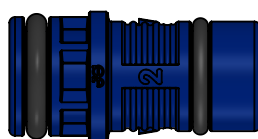


Pipe ID de-burred ready for use

2- Select Appropriate Tube Support (1 OR 2)

Select a tube support that will fit into the tube and requires a firm hand assembly. To do this, it is advised that the largest tube support (2 - Blue) is inserted first. If this one does not fit, then try the others in descending order. Insert the selected tube support into the tube as shown below. To aid tube support selection, refer to table for tube internal diameters.

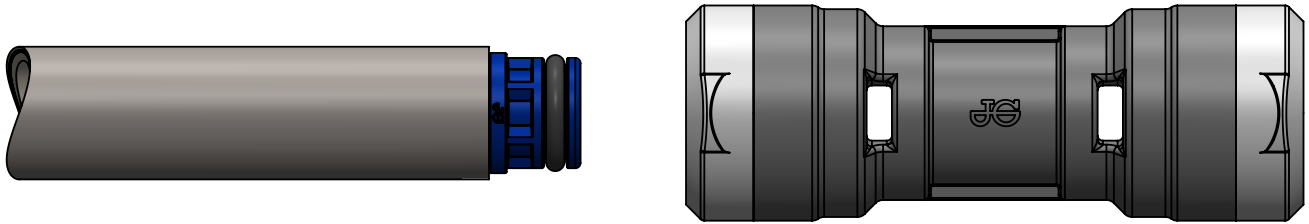
Tube Support	Colour	Tube ID
1	Cream	Ø 17.30 - Ø 17.90
2	Blue	Ø 19.60 - Ø 20.20



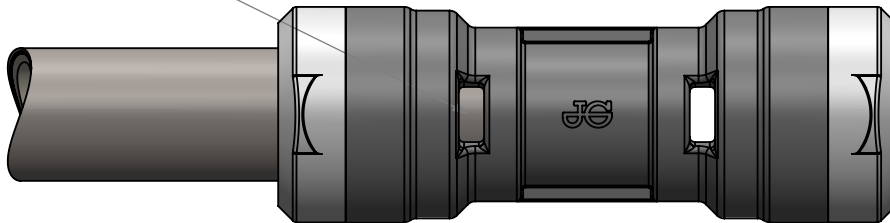
25mm/26mm Universal ID Straight Connector

3 - Pipe Insertion

Push the connector onto the pipe, ensuring the tube support is fully inserted into the fitting and is pushed against the stop.



When fully engaged the pipe should be visible through the viewing window, as shown.



Disassembly

- 1 - Remove the collet cover from the connector.
- 2 - Depress the collet head and remove the connector from the pipe.

